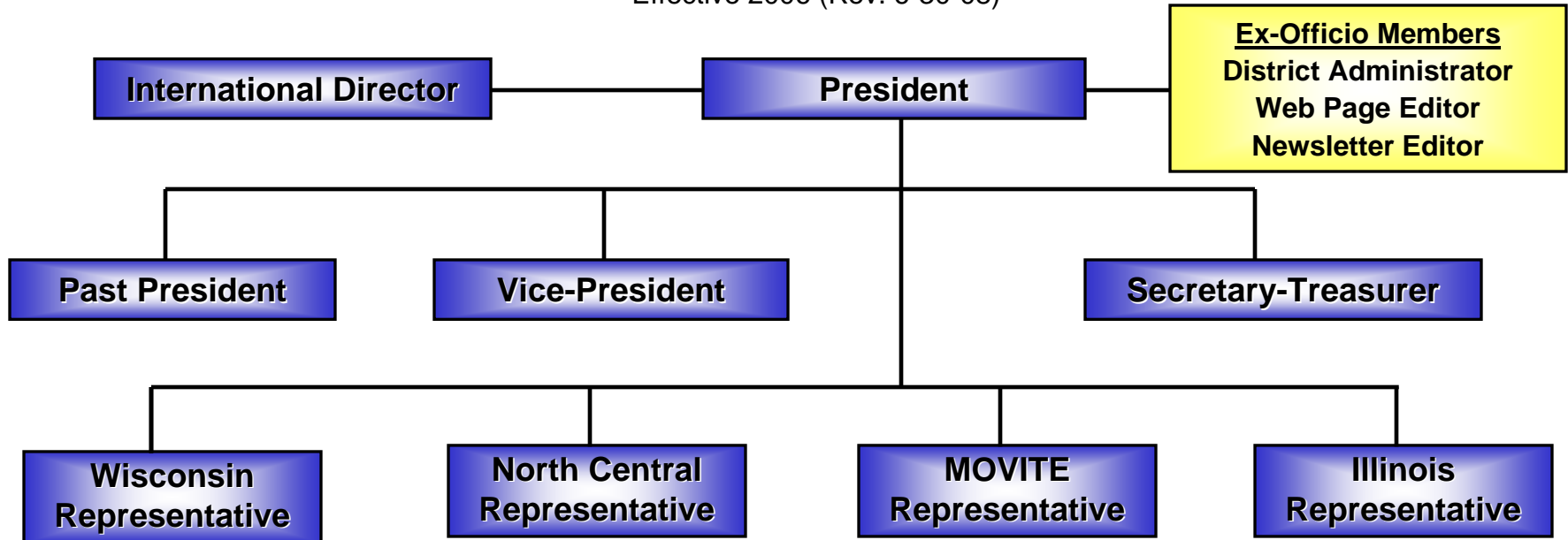


MIDWESTERN DISTRICT (D-4) ELECTED LEADERSHIP ORGANIZATIONAL CHART

Effective 2006 (Rev. 6-30-08)



<u>Elective Officer Rotation</u>	<u>2009</u>	<u>2010</u>	<u>2011</u>	<u>2012</u>	<u>International Director</u>
President	Wisconsin	North Central	MOVITE	Illinois	2007-09 NC-ITE
Vice-President	North Central	MOVITE	Illinois	Wisconsin	2010-12 IL (Election in 2009)
Secretary-Treasurer	MOVITE (Election in 2008)	Illinois (Election in 2009)	Wisconsin (Election in 2010)	North Central (Election in 2011)	2013-15 MOVITE (Election in 2012)
Past President	Illinois	Wisconsin	North Central	MOVITE	2016-18 WISCONSIN (Election in 2015)

Notes: Nine Voting Members – Ex-Officio Members are Non-Voting.

Annual Meeting Location Rotates with the Section of the President.